



# MONTHLY MEMBERSHIP PROGRESS REPORT

District 324A1

Results as of: 3/31/2015

GMT: ER GURUNATHAN

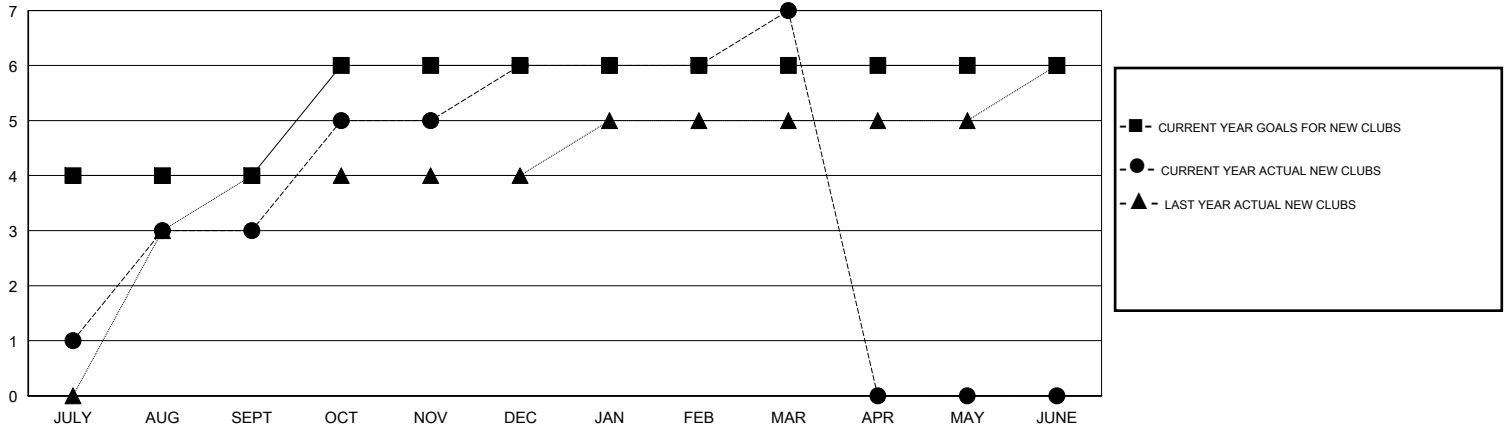
LOCATION INDIA

GMT CA 6

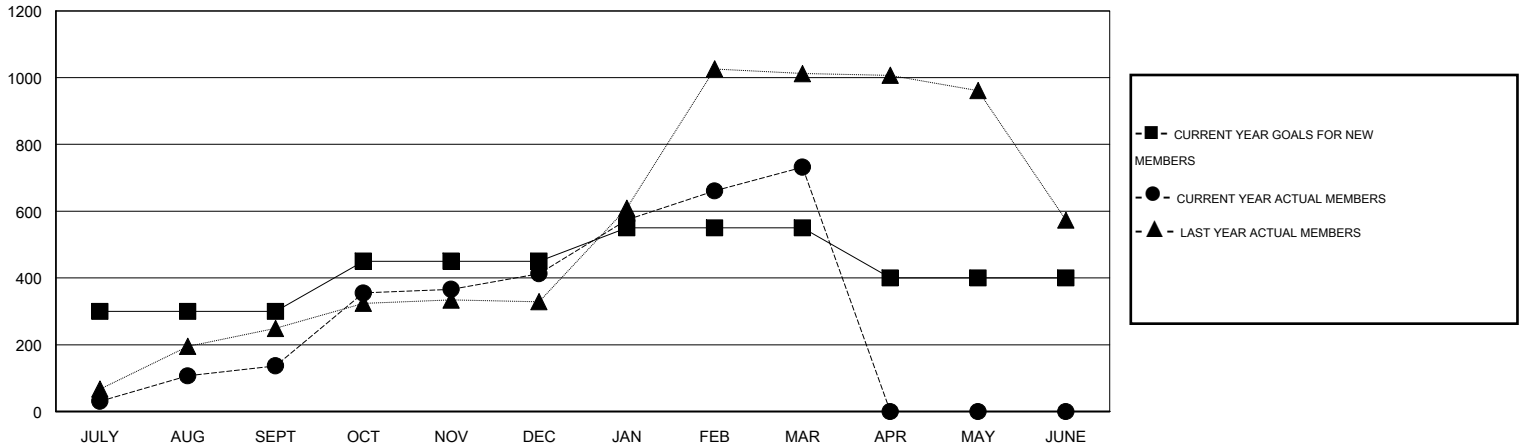
| Clubs                 |               |           |               |               |
|-----------------------|---------------|-----------|---------------|---------------|
| RESULTS FOR 2014-2015 |               |           |               |               |
| QUARTER               | NEW CLUB GOAL | NEW CLUBS | DROPPED CLUBS | NET GAIN/LOSS |
| JULY/AUG/SEPT         | 4             | 3         | 0             | 3             |
| OCT/NOV/DEC           | 2             | 3         | 2             | 1             |
| JAN/FEB/MAR           | 0             | 1         | 0             | 1             |
| APR/MAY/JUNE          | 0             | 0         | 0             | 0             |

| Members               |                 |                               |                 |               |
|-----------------------|-----------------|-------------------------------|-----------------|---------------|
| RESULTS FOR 2014-2015 |                 |                               |                 |               |
| QUARTER               | NEW MEMBER GOAL | CHARTER AND NEW MEMBERS ADDED | DROPPED MEMBERS | NET GAIN/LOSS |
| JULY/AUG/SEPT         | 300             | 273                           | 136             | 137           |
| OCT/NOV/DEC           | 150             | 414                           | 138             | 276           |
| JAN/FEB/MAR           | 100             | 387                           | 68              | 319           |
| APR/MAY/JUNE          | -150            | 0                             | 0               | 0             |

GOALS AND ACTUAL NEW CLUBS CUMULATIVE



GOALS AND ACTUAL MEMBERS CUMULATIVE



|                  |
|------------------|
| DROPPED CLUBS: 2 |
|------------------|

112 CLUBS OF 161 ADDED 1 OR MORE NEW MEMBERS

| GENDER DISTRIBUTION |                |
|---------------------|----------------|
| MALE                | 4,940 (64.26%) |
| FEMALE              | 2,747 (35.74%) |

| DROPPED MEMBERS |            |
|-----------------|------------|
| DECEASED        | 14         |
| CLUB CANCELLED  | 45         |
| OTHER           | 283        |
| <b>TOTAL</b>    | <b>342</b> |

[CLICK HERE FOR HEALTH ASSESSMENT DATA](#)

|                       |       |
|-----------------------|-------|
| FAMILY UNIT MEMBERS   | 1,584 |
| HEAD OF HOUSEHOLD     | 751   |
| NON-HEAD OF HOUSEHOLD | 833   |